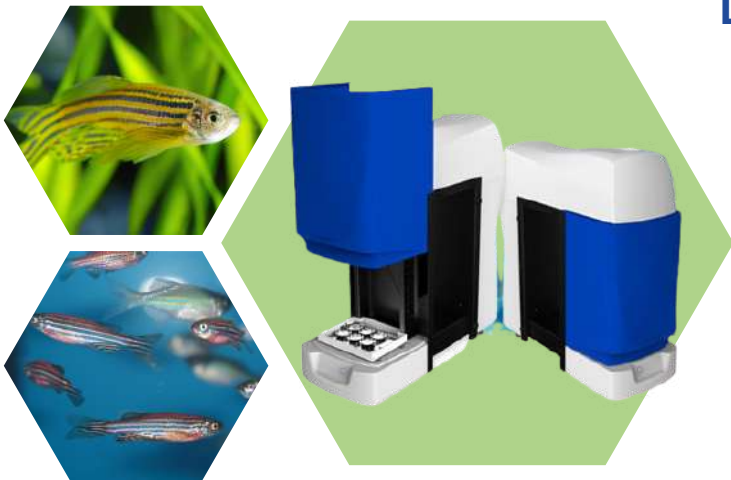


# ZEBRALAB

## HIGH THROUGHPUT MONITORING OF FISHES



### Larval and adult fishes analysis



#### **Zebrafish community**

Worldwide leading system. Trusted by over 350 laboratories



#### **Microplate compatible**

Perform automated behavioral tests on Zebra fish larvae in any well plates



#### **Total Control**

Controlled and repeatable conditions. Trigger stimuli such as sound or light

### High throughput Monitoring

ZebraLab is a state of the art automated observation and video tracking solution designed by ViewPoint. It is the first ever complete system for high throughput tracking and behavioral analysis of zebrafish. ZebraLab can be deployed to track and calculate the activity of zebrafish embryos, larvae and adult fish in multi-well plates or tanks.

Controlled environment, reliable results

Our innovative software, and apparatus offers the researcher controlled experimental conditions, and reliable results. ZebraLab is designed to track and record behavioral output from 6 to 192 zebrafish larvae or embryos simultaneously. Adult zebrafish are just as accurately tracked, whether it is a single individual or shoals up to 30 individuals.

## ZebraLab components

As your research demands will grow, scalability is key. This is where ViewPoint surpasses by far any other systems. Scaling your experiments is possible by adding additional components such as ZebraBox, ZebraTower or ZebraCube systems to your setup. Offering the possibility of connecting up to four apparatus to one ZebraLab system.



## ZebraBox Revolution

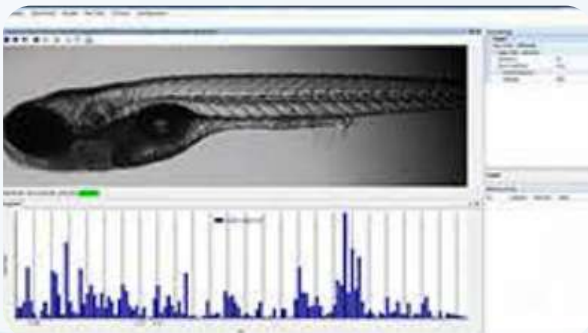
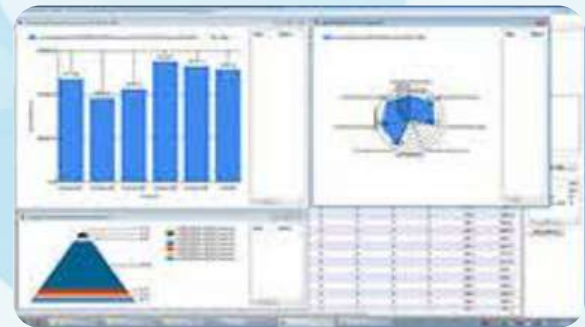
The ZebraBox is a component of ZebraLab, often bundled together, it allows an automated observation and tracking of larval zebrafish, and zebrafish embryos. ZebraBox is capable of tracking and quantifying activity level of zebrafish larvae in multi-well plates, up to 96 individuals simultaneously in each box.

ZebraBox can revolutionize your research thanks to its scalability: Several ZebraBoxes can be installed in parallel, allowing tracking even more zebrafish with each ZebraLab system. With this state-of-the-art system from ViewPoint, High throughput event recording is at your fingertips!

Versatility and reproducibility are crucial: The ZebraBox is flexible enough to accommodate various protocols using 6, 12, 24 and 96 well plates. This system will provide fully standardized experimental conditions with its integrated illumination, an infrared constant lighting, controllable white light source and water flow.

### Available software add-ons:

- Rotation and histograms
- Social contact
- Cardiovascular screening (Heartbeat/Blood flow/Gut transit)
- High speed behavior (C/S shape analysis, escape response)
- Multitracking and Shoaling behaviors
- 3D Tracking
- Virtual reality/Preying



### Available enhancements:

- Temperature control
- Vibration/Sound stimuli
- Shocker
- Photomotor response/High intensity Light Stimuli
- Waterflow

## PROVIDED SERVICES

### Update

All updates are compatible. You can constantly improve your research.

### Training

Provided with an on-site training. All the users will know how to get the best from our solution.

### Remote support

Constant remote support available. We can quickly provide assistance, diagnose, and fix any issue.

### Worldwide coverage

Worldwide offices. From protocol setup to assistance or maintenance, you are not alone.